

# LUMEN 8

BESPOKE SWITCHES

- Consult
- Specify
- Quote
- Manufacture

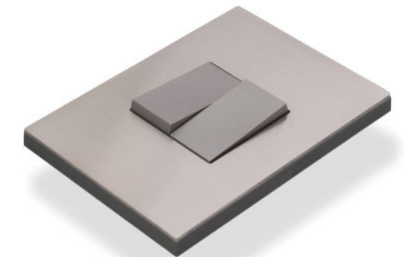
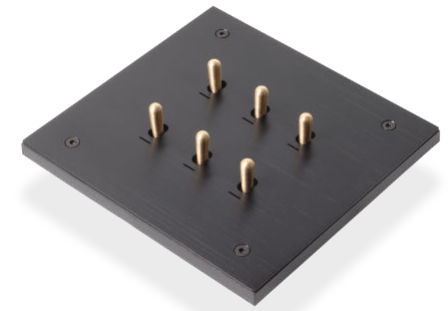




## Q - BIC

Minimalist, Industrial, Modern and Eclectic.

Precision engineering provides the inspiration for the Q-BIC range resulting in a no frills design with crisp, clean lines. The minimalistic industrial aesthetic can be further enhanced by using SCREW fixing and TOGGLE lever options.

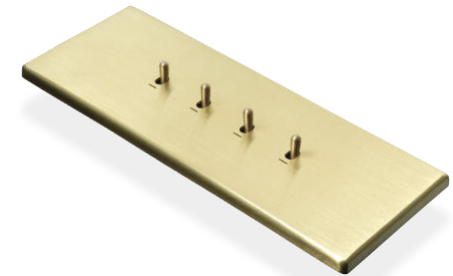




## ELEMENT

Art Deco, French Provence and Hollywood Glam.

Art Deco elegance and decadence, a period that embraced both handcraft and machine production, provides the inspiration for this range. The rounded edges and plush finish are achieved with extensive hand finishing resulting in each cover plate being slightly unique. These are very labour intensive to produce and will last a lifetime.





## ICE

Eclectic, Post Modern, Pop Art, Classical and Glam.

Our ICE range combines the playfulness of Pop Art with the elegance of modern design. The cover plates appear to be enveloped in ice cubes and we can mostly match colours to requirements.

ICE cover plates can be fun and striking or subtle and sophisticated. Either way they are uniquely Lumen8.





## RAW

Minimalist, Retro, Scandanavian and Hamptons.

RAW cover plates are individually machined from solid materials such as Corian and Bamboo. A shadow line provides a floating appearance while the beveled edges echo shapes of cast concrete.



# GHOST

Glam, Minimalist and Eclectic.

An industry-first switchgear system where the cover plate fits flush with the wall. By matching the cover plate with the wall finish it disappears, giving rise to the name "Ghost".

A surface mounted version of GHOST also exists for existing wall boxes which cannot be changed.

This range does require extra care in planning and installation. Builders and electricians must be made aware of the requirements for fitting this range during the planning stages.

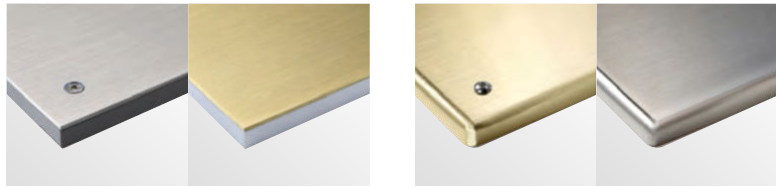


LUMEN8

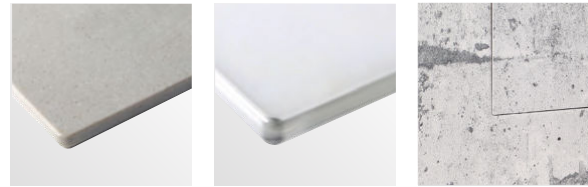
BESPOKE SWITCH-GEAR



COVER PLATES & FINISHES



Screw-on **Q-bic** Clip-on Screw-on **Element** Clip-on



**Raw** (Clip-on) **Ice** (Clip-on) **Ghost**

- |                              |                           |                              |
|------------------------------|---------------------------|------------------------------|
| Stainless Steel - Brushed    | Brass - Brushed           | Copper - Brushed             |
| Aged Brass - Linear          | Aged Brass - Linen        | Aged Brass - Flat            |
| Aged Brass - natural         | Pewter                    | Pewter Hammered              |
| Coal Steel                   | Diesel Steel              | Abstract Steel               |
| Old Copper                   | White Satin Coated        | White FerrograinSatin Coated |
| * Natural Aluminium Brushed  | * Natural Aluminium Flat  | Black Satin Coated           |
| Black FerrograinSatin Coated | * Black Aluminium Brushed | * Black Aluminium Flat       |
| Red Satin Coated             | Mint Satin Coated         | Custom Colour Coated         |
| Dark Bronze Satin Coated     | Light Bronze Satin Coated | Slate Speckled Coated        |
| * Custom Wallpaper           | * Custom Veneer           |                              |

\* Not available in Element

- Concrete
- White
- White
- Black
- Pearl Grey
- Deep Grey
- Bamboo
- Oak
- Iroko
- Kiaat

- White
- Mint
- Black
- Custom

- Custom

LABELS

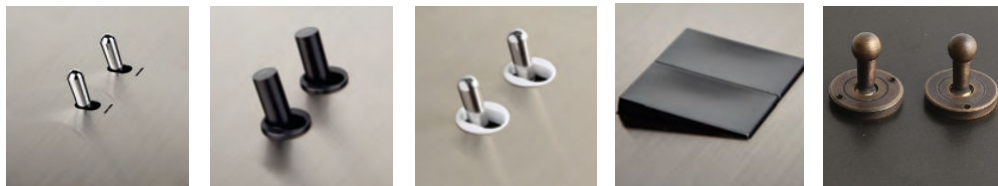


**Inserts**



**Engraved**

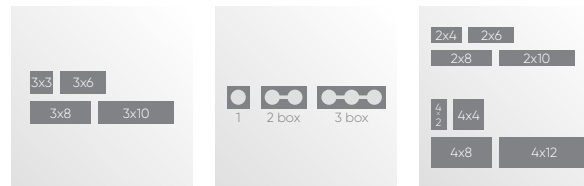
LEVERS



**Toggle** **Pod** **Togpod** **Modular** **Custom**

- |        |               |                |           |
|--------|---------------|----------------|-----------|
| Chrome | Black / Black | Chrome / Black | White     |
| Brass  | White / White | Chrome / White | Magnesium |
| Coated |               | Brass / Black  | Black     |
|        |               | Brass / White  |           |

WALL BOXES



**Africa & UK** **Germany** **South Africa**

STYLE



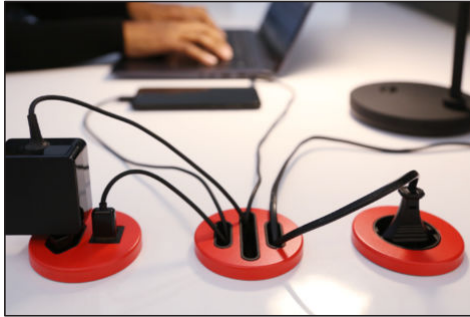
**Modular** **Component**

Levers and sockets are interchangeable, allowing for configurations to be easily altered. Although less costly, this versatility could be seen as an aesthetic compromise when compared with the Component option.

Levers and sockets require dedicated cover plates and back plates. In this case the improved aesthetic comes at a higher cost and reduced flexibility when changes are required.

## DESK PODZ

Great looking desk plug points for cell phones, laptops, lamps and speakers. Excess cable can be hidden. Help focus your mind with an organized desk.



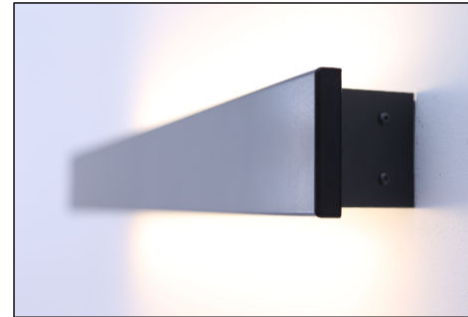
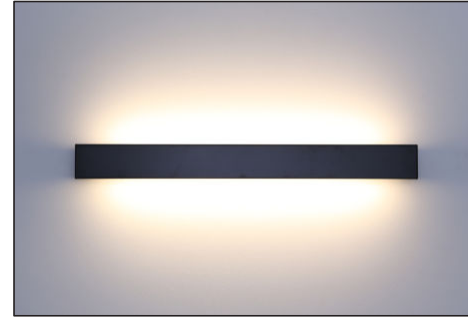
## EX-TENSION PODZ

Stay charged up without stressing over batteries going flat. WiFi functionality allows for remote operation as well as setting weekly timer schedules.



## WALL LIGHTS

Low energy LED wall lights in customizable lengths and finishes. WiFi functionality allows for remote operation as well as setting weekly timer schedules.



## CUSTOMS

When clients have for very specific requirements we sometimes are able to pull off mission impossible.



# LUMEN8

### Admin, Factory & Show Room

Unit 26, Rosbur Park, Neptune Street, Paarden Eiland, Cape Town | +27 21 510 0702

Sales Manager: [chris@lumen8.co.za](mailto:chris@lumen8.co.za) | +27 83 378 6083

Sales Consultant: [janine@lumen8.co.za](mailto:janine@lumen8.co.za) | +27 82 318 7623

Sales Consultant: [lauren@lumen8.co.za](mailto:lauren@lumen8.co.za) | +27 84 426 7048

### Johannesburg Show Room

3 Desmond Road, Kramerville | +27 11 463 1816

Sales Consultant: [adele@lumen8.co.za](mailto:adele@lumen8.co.za) | +27 74 458 6952

Sales Assistant: [dylan@lumen8.co.za](mailto:dylan@lumen8.co.za) | +27 67 017 7182

[www.lumen8.co.za](http://www.lumen8.co.za)

